

2016

Name: _____

Address: _____

City: _____

State: _____ Zip: _____

Phone: _____

Please Reserve:

_____ One Space _____ Two Spaces

_____ Inside Tent _____ Outside Tent

My Craft is _____

FEES

Inside Space: \$40.00 (6'x10')

Outside Space: \$35.00 (10'x10')

Amount Paid \$ _____

SEND A SELF-ADDRESSED STAMPED
ENVELOPE FOR RETURN OF RECEIPT

Applications MUST contain:

1. Complete Application
2. Photos of Crafts (only if you are applying first time)
3. Self-Addressed Stamped Envelope

RETURN TO:

Scenic Riverways Arts & Crafts
P.O. Box 395 • Eminence, MO 65466
(573) 226-3618

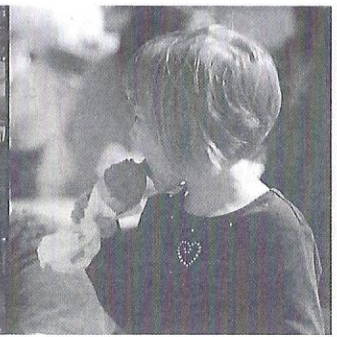
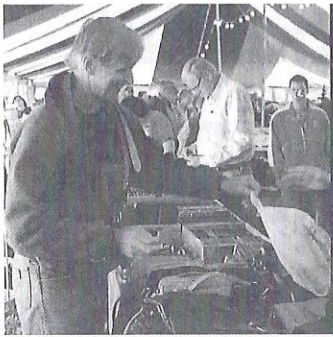
Scenic Riverways
Arts & Crafts Association
P.O. Box 395
Eminence, MO 65466

48th Annual Arts & Crafts Show & Sale



October 8-9, 2016

presented by
**Scenic Riverways
Arts & Crafts
Association**



Welcome to the 47th Annual Arts & Crafts Show and Sale, held the second weekend in October at Circle B Campground. The Scenic Riverways Arts and Crafts Association is a not-for-profit organization and was formed for the express purpose of promoting and showcasing the craftsmanship of Ozark artists and hobbyists.

We offer exhibit space inside tents. Outside spaces are also available.

Inside Tent Space - \$40.00 (6'x10')

Outside Space - \$35.00 (10'x10')

Complete the attached application to reserve your space. Inside spaces are limited and reservations are made on a first-come basis. If outside set up requires more than a 10'x10' space, additional space must be reserved. The deadline for making reservations is September 1, 2016. There will be no refunds after this date.



SHOWTIMES

Saturday

9:00 a.m. - 5:00 p.m.

Sunday

10:00 a.m. - 4:00 p.m.

RULES AND REGULATIONS

- Only handcrafted items will be accepted. **ANYONE WITH MASS PRODUCED ITEMS WILL BE ASKED TO REMOVE THEM FROM HIS OR HER BOOTH.** If the items are not removed, the crafter will be asked to leave and not allowed to re-enter in the future. This policy will be strictly enforced, because it protects the integrity of the show and its participants.
- This is not a juried show, but for insurance purposes and the protection of the exhibitors, **all first-time applicants must submit pictures and a full description of your craft to be displayed.** Applications will not be considered complete until pictures have been received. Pictures will be kept on file and not returned. Crafters must have the receipt at the time of set up to be given a booth space.
- Although 24-hour security protection is provided throughout the show, the Scenic Riverways Arts and Crafts Association is not responsible for any loss, theft, or damage. We are not responsible for accidents.
- Exhibitors must wait for a staff member to place them in their designated show area. Vehicles not used for exhibit may not remain in the show area. They must be moved by 8:00 a.m. on Saturday. Exhibitors may set up from 10:00 a.m. to Midnight on Friday. Late arrivals may set up from 6:00 a.m. to 8:00 a.m. on Saturday. Each exhibitor is responsible for cleaning up the booth and camp area of all refuse before leaving. All vendors must display both days to attend show. Early departures on either day are not allowed.

- There are designated food vendors, other than non-profit organizations. **Food sales by exhibitors other than those approved by the association are expressly prohibited.**



OVERNIGHT ACCOMMODATIONS

Rental of campsites, RV sites, or cabins must be taken care of through Circle B Campground. The fee for booth space does not include accommodations. For more information, or to reserve a site, contact Circle B Campground at (573) 226-3618.

Information for other lodging in the area can be found on the Eminence Ara Chamber of Commerce website www.eminencemo.com

There will be music on the grounds for both days. For more information on the Show and Sale, write or call:

Scenic Riverways Arts & Crafts Association
P.O. Box 395
Eminence, MO 65466